



WILDERNESS LAKE PRESERVE

May 2024

WILDERNESS LAKE  
P R E S E R V E

# NATURE'S NEWS

**Event Calendar**

---

**Living with Wildlife**

---

**The Barred Owl  
(Pictured) and  
Other Birds of  
Florida**

---

**Recipe of the  
Month**

---

**Cool Facts You  
Didn't Know About  
Amazing Florida  
Animals**

PRINTED COPIES  
AVAILABLE AT THE LODGE





# TABLE OF CONTENTS

**02**

**Cool Facts You  
Didn't Know  
About Amazing  
Florida Animals**

---

**03**

**The Barred Owl  
and Other Owls of  
Florida**

---

**04**

**Recipe of the Month**

---

**05**

**Living with Wildlife**

---

**6-10**

**Events at the Lodge**

---

**11**

**Pool Season Reminders**

---

**12-13**

**Spa Services**

---

**14-15**

**Event Calendar and  
Announcements**

---

**16-17**

**Classes and Clubs**

---

**18**

**Storytime on  
Mondays**

---

**19-22**

**Event Photos**

---

**23-25**

**Contact Us and CDD  
Announcements**

---

## DID YOU KNOW?

### Cool Facts You Didn't Know About Amazing Florida Animals

#### Manatees have toenails.

Manatees share a common ancestor with the elephant and their similar toenails are one of the pieces of evidence for their evolutionary relationship. Mani(tee) pedi, anyone?

1

2

Over 1.3 million alligators call Florida home. Compare that to the 21 million people that also call the Sunshine State home and you have a recipe for common encounters with our favorite 9-foot reptile.

3

There are crocodiles in the Everglades. Crikey! Crocodiles? You may have heard about the Nile crocodiles found in the Everglades a couple of years ago. Right up there with the Burmese python (which is still a known, established threat), Nile crocodiles would be a killer invasive species for Florida's unique ecosystem and for us. Fortunately, the foreign crocodiles seem to have been an isolated event so far. There are, however, still crocodiles in the Everglades—American crocodiles. This is the only place where alligators and crocodiles share a home. They can be distinguished from their alligator neighbor by their lighter skin, narrower snout and larger size. While these living dinosaurs are definitely dangerous, they are much shyer and less aggressive than their overseas cousins (phew!).

4

Flamingos are Floridians. Any flamingos found here were assumed to be non-native escapees from captive populations. A team of South Florida researchers has recently disputed this "fact" and has put forth evidence that flamingos are, in fact, Floridians!

# The Barred Owl and Other Owls of Florida.

## 1 Barred Owl

The barred owl is a large owl with a drab, barred plumage. It is brown above with cream-white barring and pale below with a scalloped mantle and brown streaks on the lower breast and belly. It has a large, rounded head and a pale facial disk with faint, concentric markings. Its large, dark eyes are close-set, and it has a pale yellow bill. The barred owl feathered legs and yellow feet with black talons.

Barred owls mainly inhabit mature deciduous and mixed forests but can also be found in coniferous forests, forest edges, semi-open woodlands, and large parks with old trees. They nest in hollow trunks of large trees or snags. Barred owls are fairly common in Florida. Look out for them in deep, wooded areas.

## 2 Barn Owl

Owing to their peculiar appearance and eerie call, the barn owl is often given monikers such as the demon owl, the ghost owl, and even the death owl. Yet barn owls are incredibly useful animals that help keep rodents at bay.

The barn owl is an unusual beauty. It is a medium-sized owl with a heart-shaped face and a characteristic pale, speckled plumage. The upperparts are rusty-brown with dark patches. The face and underparts range from cream to white. It has slender, feathered legs and long, broad wings that enable sharp, agile movements. Barn owls occur in the open countryside at lower altitudes. They inhabit grasslands, farmlands, open woodlands, and woodland edges.

## 3 Northern Saw-Whet Owl (Rare)

The northern saw-whet owl is one of the smallest and most adorable owls on the continent. It has a large, round head and a compact body. Its plumage is a rich brown with small white spots on the upperparts and blotchy white streaks below. The facial disc is paler brown, and it has a white Y-shape from the brows to the bill, between its huge yellow eyes. Northern saw-whet owls mainly inhabit coniferous forests. During winter, they also take to deciduous or mixed woodlands. They nest in tree holes excavated by woodpeckers or in the old nests of other birds. Northern saw-whet owls are uncommon in Florida, only occurring in the north during winter. Listen for the call, which can be heard from a distance. It is a whistly, repetitive toot, that can be described as a saw being sharpened on a whetting stone, hence the name.

# Hawaiian Chicken Skewers

## Ingredients

- 1/2 c. barbecue sauce
- 1/3 c. soy sauce
- 1 tbsp. rice wine vinegar
- 2 tsp. sesame oil
- 2 cloves garlic, minced
- 1 tbsp. ginger, minced
- 1 tsp. honey
- kosher salt
- 1 tsp. crushed red pepper flakes
- 2 chicken breasts, cut into 1" pieces
- 2 c. cubed pineapple
- 2 green bell peppers, diced
- 1 red onion, diced
- white rice, for serving
- 2 tsp. cilantro



## Directions:

Step 1. Preheat grill or grill pan on medium heat.

Step 2. In a large bowl, whisk together barbecue sauce, soy sauce, vinegar, oil, garlic, ginger and honey until completely combined. Season with salt and red pepper flakes.

Step 3. Build skewers by alternating chicken, pineapple, peppers, and red onion. Place on a baking sheet and pour over half your marinade.

Step 4. Place skewers on preheated grill, and brush with reserved marinade. Cook five minutes and flip, brushing the other side with marinade as well.

Step 5. Cook five more minutes, or until the chicken is cooked through.

Step 6. Serve with white rice and a sprinkle of cilantro.



# Living with Wildlife



The Preserve at Wilderness Lake is a thematic 680-acre community that offers a spectacular blend of natural beauty, wildlife, and resort-like amenities. The scenic setting of the 32 acre spring-fed lake and surrounding natural areas are ideal habitats for numerous wildlife species. Most wildlife fear humans and rarely pose a threat, but close encounters are occurring more often. To coexist with the wildlife in The Preserve at Wilderness Lake, the Florida Fish and Wildlife Conservation Commission offer the following suggestions in minimizing unpleasant encounters.

- Ensure trash is secured.
- Remove pet food and water bowls from outdoor areas.
  - Avoid allowing pets to roam freely.
  - Refrain from feeding the wildlife.
  - Observe wildlife from a distance.
- Use caution when navigating around all wildlife.

These helpful suggestions will assist in maintaining a well-balanced community for the residents and wildlife.

Thank you,

The Lodge Staff



EVENTS TEAM AT  
WILDERNESS LAKE

# FUN EVENTS



**CINCO  
DE  
MAYO**

**HAPPY HOUR**  
**FRIDAY, MAY 3rd**  
**6:30 PM**  
**Live Music**

Cost:  
\$5.00 (Residents)  
\$10.00 (Non-residents)

RSVP @  
(813) 995-2437

Must be at least  
21 years of age  
to attend.

Light Appetizers  
Desserts  
Mixers  
B.Y.O.B.

# TRIVIA

Light refreshments provided.

*Night*

**THURSDAY, MAY 23RD**

**6:30 PM**

RSVP with the Lodge  
at (813) 995-2437.



\*\*\*\*\*

*Join Us For A*



**Memorial Day**  
**BBQ**

**SATURDAY, MAY 25TH** | **FOOD**  
**NOON** | **DRINKS**  
**MUSIC**

---

**Please RSVP @ (813) 995-2437.**

\*\*\*\*\*

# WHAT'S HAPPENING



*You're invited!*

## MOTHER'S DAY CELEBRATION

SATURDAY, MAY 11 @ 2PM  
at The Lodge

- Surprise crafts for kids to give mom
- Light appetizers & desserts
- Flower bouquets for each mom

RSVP to 813-995-2437



## Core Health, Strength and Belly Training

Presented by:  
Ideal Core Health

- REDUCE BELLY FAT
- STRENGTHEN AND SHAPE YOUR BOOTY!

Every Other Saturday at 10 am

Contact the Lodge for more information

**813 995 2437**

## PHOTOGRAPHY *Club*

Capture the Magic: Join the WLP Photography Club!

### What to Expect....

- ★ Expert Guidance.
- ★ Craft Stories with Every Click.
- ★ Supportive Photography Community.
- ★ Structured Meetups with Hands on Learning.

### Agenda:

- ➔ Introductions, sharing, and learning goals.
- ➔ Bring your camera gear and show case your work.
- ➔ Explore new photography facets each week.

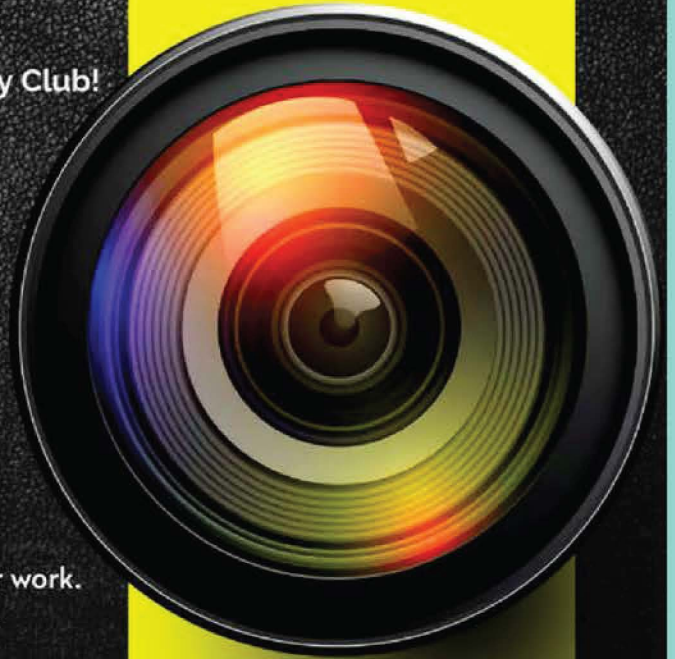
### Future Prospects:

- ★ Surprise Guest Photographers.
- ★ Offsite Field Trips.

**Reserve your spot today!**

Meetings:  
1st Wednesday of each month  
6:00 PM  
Location: Theatre

Email: [jaden@nonegatives.pro](mailto:jaden@nonegatives.pro)  
Call/Text: (813) 485-5015



## GROW YOUR BUSINESS



Nature's News is working toward a new print-edition funded by advertisers. We are currently accepting registration of interest at the lodge. Please call or stop in if you are interested in promoting your business to the residents of our community. Specialty pricing does apply to residents of the district. Space is limited.

813-995-2437 - ASK FOR TISH



# SMALL BUSINESS EXPO

MAY  
18TH



BOOTH  
RENTAL  
\$10

REGISTER @  
813-995-2437

10:00 AM -  
3:00 PM

# POOL SEASON

POOL RULES ARE DETERMINED BY FLORIDA STATUTES AND MUST BE OBSERVED, ENFORCED AND POSTED AT ALL TIMES



## Reminders for Spring & Summer Fun

Pool season is upon us, and the pools are a great place to unwind and enjoy a relaxing BBQ with your family and friends. Upon arriving at the pool, you will notice a pool attendant stationed at the front gate. The pool attendant will ask to see your Lodge Access Card ID; at that point you will sign in yourself, family and guests. After signing in, the pool attendant will issue you a wrist band. The wrist band must be worn at all times. This process ensures compliance with the Board mandated Aquatics rules. (Pool attendant on staff March - September).

POOLS & JACUZZI CLOSE AT DUSK EACH NIGHT.

NO FOOD OR BEVERAGES WITHIN 10 FEET OF POOLS.

SHOWER BEFORE ENTERING THE POOLS OR JACUZZI.

SMOKING IS PROHIBITED.

GLASS CONTAINERS ARE PROHIBITED.

ANYONE UNDER THE AGE OF 12 MUST BE ACCOMPANIED BY AN ADULT.

NO RECREATIONAL FLOATATION DEVICES IN THE POOLS.

RESIDENTS AGES 12 - 17 ARE ALLOWED ONE GUEST WITH PARENTAL PERMISSION.

GUESTS MUST BE AT LEAST **12** YEARS OF AGE.

RESIDENTS AGES 12 - 17 MUST CHECK IN WITH THE LODGE STAFF AND OBTAIN A WRISTBAND UPON ARRIVAL AT THE LODGE.



**KID'S ACCESS WRISTBANDS ARE NOW AVAILABLE FOR KIDS AGES 12-15 YEARS OF AGE. THE WRISTBANDS WILL ALLOW DIRECT ACCESS TO THE POOLS AND TENNIS COURTS.**

SAFETY EQUIPMENT IS IN PLACE TO MEET FL. STATUTES AND SHOULD NOT BE USED FOR RECREATIONAL PURPOSES.

EACH WLP FAMILY IS ALLOWED TO BRING UP TO 5 NON-RESIDENT GUESTS.

SWIMMING FROM THE COMMUNITY OWNED DOCKS IS PROHIBITED.



# SPA SERVICES



## BASIC MANICURE

Nails will be shaped, cleansed and pampered. You will receive a hand and arm massage and finished with your choice of polish.

**\$15**



## ISLAND GETAWAY

Enjoy tropical fragrances as you are pampered! After nails are shaped and cleansed, you will receive an invigorating anti-aging hand exfoliation that is completed with a hot towel wrap. A soothing arm and hand massage will relax you and will be finished with polish of your choice.

**\$20**



## BASIC PEDICURE

Shaping of nails and exfoliation begin this pedicure followed with thorough cleansing of feet, a relaxing massage and polish. Aromatherapy will heighten the senses leaving you feeling refreshed and beautiful!

**\$28**



## MILK AND HONEY PEDICURE

After your feet are soaked and cleansed, you will lose yourself in the experience of a mud mask for the feet and long massage for total relaxation.

**\$35**

# SPA SERVICES AT WILDERNESS LAKE

## SPA SERVICES

### NO POLISH PEDICURE

Using a blend of Peppermint and Pine Oils, feet will be soaked, toenails filed and feet exfoliated. A long massage will complete the experience.

**\$28**

### MINI MANI PEDI COMBO

This package is an abbreviated combination of the traditional manicure and pedicure. Fingernails will be shaped, buffed and polished. Feet will be soaked, toenails shaped and buffed and a light massage will be given. Polish will be applied.

**\$30**

### PRINCESS PAMPERING

This is a combination mani-pedi specifically designed for the young ladies! Nails will be shaped and cleansed and polish will be applied to hands and feet. (Ages 14 and under)

**\$22**

### CND SHELLAC MANICURE

14-day wear polish with ZERO dry time which is finished with a hand and arm massage.

**\$28**



### ADD ON SERVICES

Buff and Polish Change \$8  
Add a French manicure \$3  
Nail Repair \$2  
Rhinestones and decals (per nail) \$2



# May

MON	TUE	WED	THURS	FRI	SAT	SUN
		<b>1</b> CDD Meeting 6:30 pm  Food Truck Night 5 pm  Photo Club 6 pm	<b>2</b>	<b>3</b>  Cinco De Mayo 6:30 pm	<b>4</b>  Kids Craft Corner 12 pm	<b>5</b>  Playground Meet Up 1 pm
<b>6</b>  Storytime for Tots 10 am  ARC Meeting 6:30 pm	<b>7</b>	<b>8</b>  Food Truck 5 pm	<b>9</b>	<b>10</b>  Sip and Paint 6 pm	<b>11</b>  Mother's Day Celebration 2 pm	<b>12</b>
<b>13</b>  Storytime for Tots 10 am	<b>14</b>	<b>15</b>  Food Truck 5 pm	<b>16</b>  Coffee and Donuts for Moms 10 am	<b>17</b>	<b>18</b>  Business Expo 10 am	<b>19</b>  S'Mores Under the Stars 7 pm
<b>20</b>  Storytime for Tots 10 am  ARC Meeting 6:30 pm	<b>21</b>  HOA Meeting 6:30 pm	<b>22</b>  Food Truck 5 pm	<b>23</b>  Trivia Night! 6:30 pm	<b>24</b>	<b>25</b>  Memorial Day BBQ 12 pm	<b>26</b>  Hoops and Scoops 2 pm
<b>27</b>  Storytime Cancelled	<b>28</b>	<b>29</b>	<b>30</b>	<b>31</b>  Family Movie Night 7 pm		



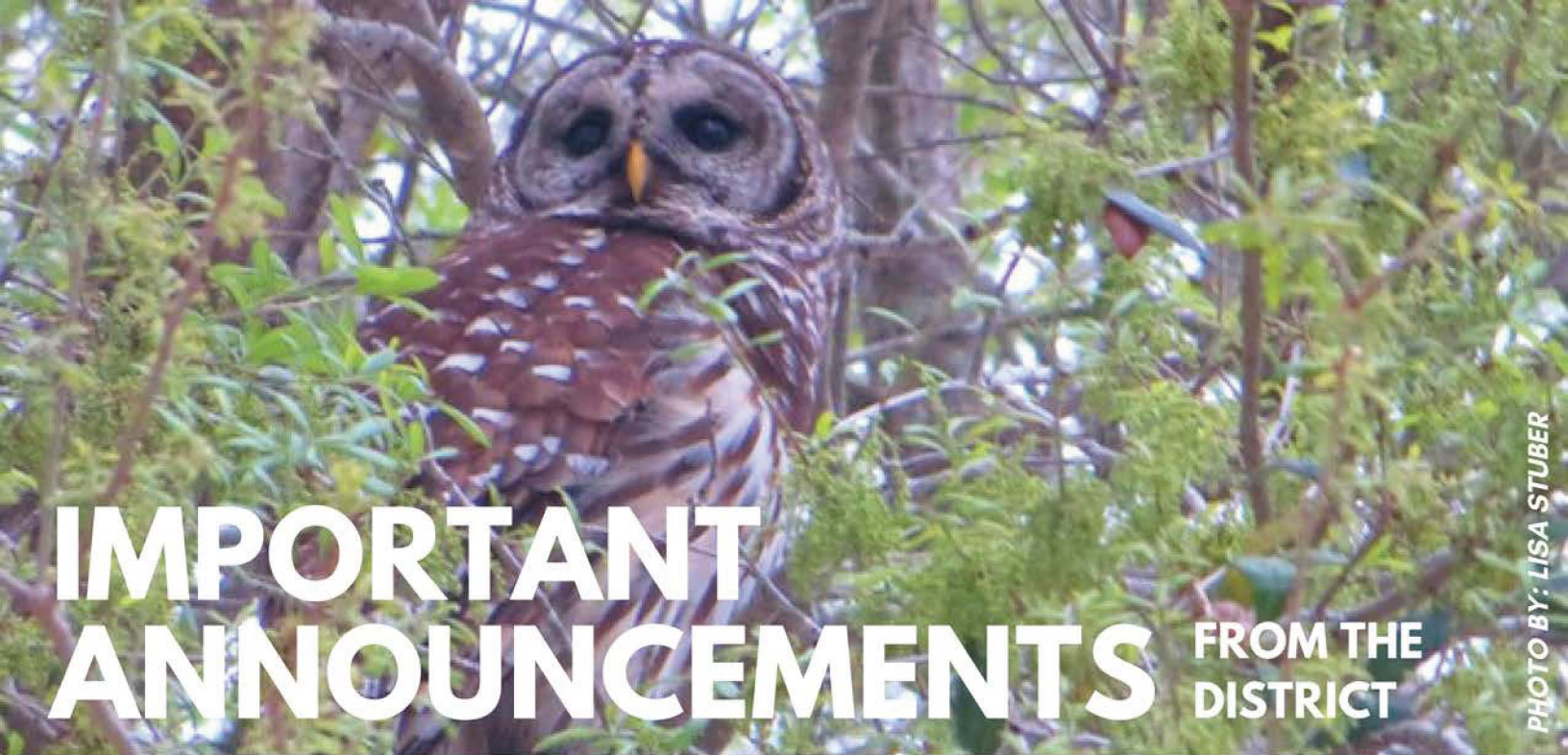


PHOTO BY: LISA STUBER

# IMPORTANT ANNOUNCEMENTS

## FROM THE DISTRICT

### 01 Landscaping

Monitoring the turf damage from the overspray of weed control. RedTree will replace the turf at no charge if the turf does not recover

### 02 District Engineer

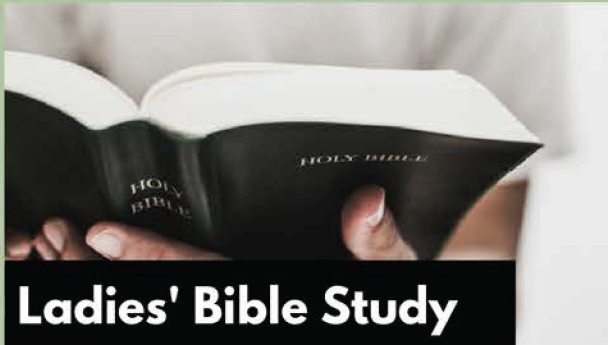
-The Geo Tech samples of the roadway were completed. -Further SWFWMD pond permit repairs are scheduled to begin in mid-April.

### 03 Read Full Meeting Highlights

READ MORE 

CHECK OUT THESE RESIDENT & VENDOR  
CLASSES AND CLUBS AT WILDERNESS

# CLASSES & CLUBS



## Ladies' Bible Study

Wednesdays 10 AM

Contact Shuyan at: 970-978-7568

Contact Janice at: 727-776-5723



## Yoga

Tuesdays & Thursdays 8:40 AM & 9:55

ACMontact LuAnn at: 813-846-0874

Email: [imgagain@yahoo.com](mailto:imgagain@yahoo.com) (COST: \$5)



## Water Aerobics

Monday - Friday 9 AM - 10 AM



## Walking

Walking, Strength & Toning Monday,  
Wednesday, Friday 9:30AM - 10:45 AM



## Pickleball Rocks

Tuesday & Thursday 6:30 PM

Contact Susan at: 602-315-0757



## Chat'hers Club

Ladies' Social Club - This year the Chat'hers  
are sponsoring Hospice.

Contact Telicia at: 786-301-4506

CHECK OUT THESE RESIDENT & VENDOR  
CLASSES AND CLUBS AT WILDERNESS

# CLASSES & CLUBS



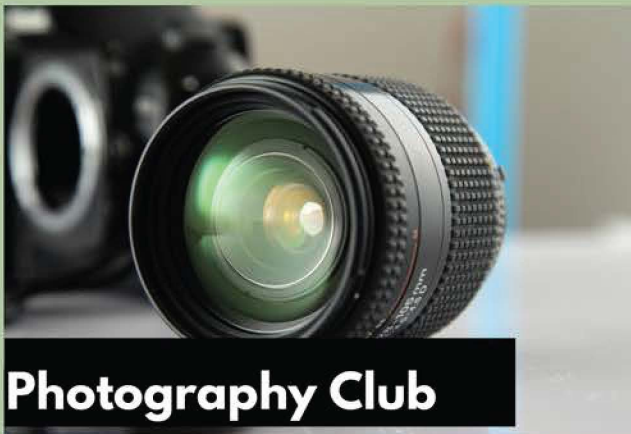
## Rummikub

Thursday 1 PM  
at the Activities Center



## Mahjong

Monday 1 PM  
at the Activities Center



## Photography Club

Every 1st Wednesday of the month in  
the Theater

Interested in starting a club?  
Contact the Lodge today at (813) 995-2437  
or email us at [events@wlplodge.com](mailto:events@wlplodge.com).

THE HAPPENINGS

# WELCOME TO

# Storytime

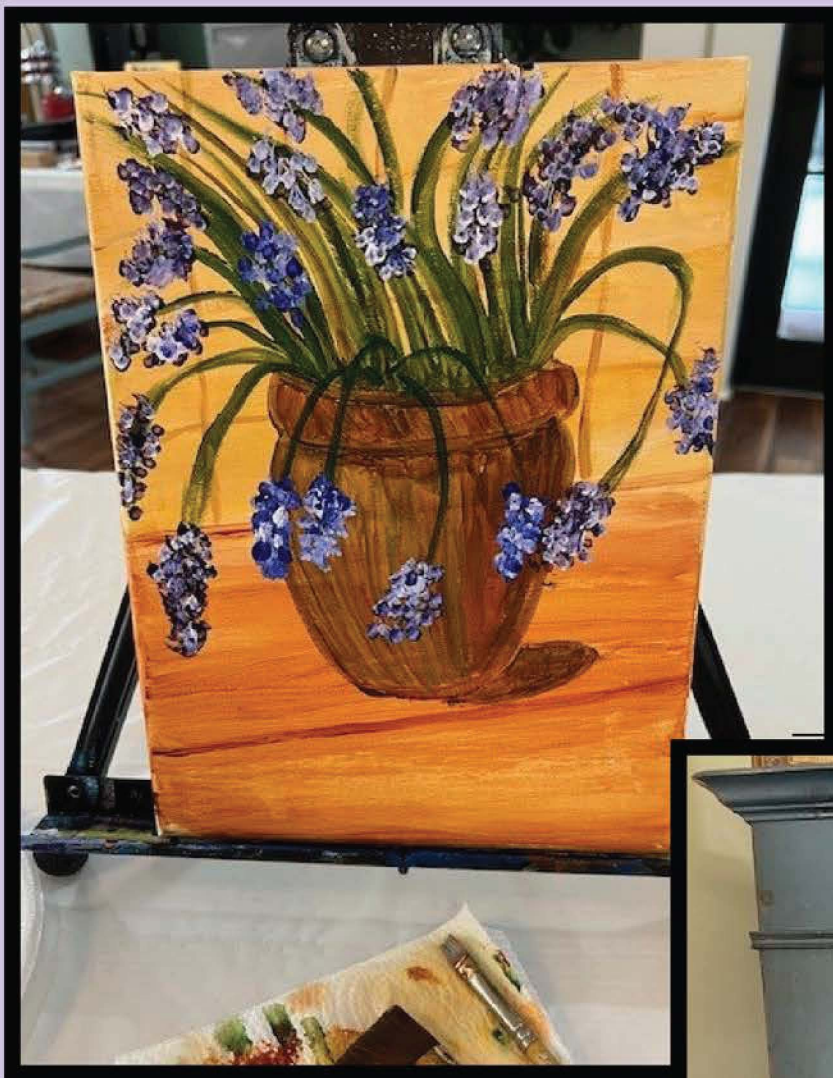


**JOIN  
US!**

Meet us in the Nature Center every Monday at 10 AM for a morning filled with reading, singing, making crafts, and a delicious snack.

# Spring Picnic!





# Art Class



# Wood Crafting



hand  
crafted



# Goat Yoga



GET IN TOUCH WITH US

# CONTACTS

## **WILDERNESS LODGE**

21320 WILDERNESS LAKE BLVD.

LAND O' LAKES, FL 34637

**813-995-2437**

## **BOARD OF SUPERVISORS**

**HOLLY RUHLIG, CHAIR**

**HEATHER HEPNER, VICE CHAIR**

**BETH EDWARDS, SECRETARY**

**OPEN SEAT, SECRETARY**

**AGNIESZKA FISHER, SECRETARY**

[SUPERVISORWLP4@GMAIL.COM](mailto:SUPERVISORWLP4@GMAIL.COM)

[SUPERVISORWLP5@GMAIL.COM](mailto:SUPERVISORWLP5@GMAIL.COM)

[SUPERVISORWLP2@GMAIL.COM](mailto:SUPERVISORWLP2@GMAIL.COM)

[SUPERVISORWLP3@GMAIL.COM](mailto:SUPERVISORWLP3@GMAIL.COM)

[SUPERVISORWLP1@GMAIL.COM](mailto:SUPERVISORWLP1@GMAIL.COM)

## **DISTRICT STAFF**

**TISH DOBSON**

LODGE & DISTRICT MANAGER

**TERRI OAKLEY**

ASSISTANT MANAGER

**KATHERINE EYNAUD**

LIFESTYLE COORDINATOR

[MANAGER@WLPLODGE.COM](mailto:MANAGER@WLPLODGE.COM)

[TOAKLEY@WLPLODGE.COM](mailto:TOAKLEY@WLPLODGE.COM)

[EVENTS@WLPLODGE.COM](mailto:EVENTS@WLPLODGE.COM)

## **LODGE HOURS OF OPERATION:**

SUNDAY: NOON - 9:00 PM

MONDAY - FRIDAY: 9:00 AM - 9:00 PM

SATURDAY: 10:00 AM - 10:00 PM

## **GARBAGE PICKUP - WASTE CONNECTIONS**

**727-847-9100**

## **RECYCLING:**

WEDNESDAYS

## **FITNESS CENTER HOURS OF OPERATION**

OPEN 365 DAYS WITH ACCESS CARD

5:00 AM - 11:00 PM

## **EVENT BOOKING & SPACE RENTALS**

CALL THE LODGE

## **NAIL TECHNICIAN:**

SERVICES AVAILABLE MONDAY - FRIDAY BY APPOINTMENT ONLY

April 3rd, 2024

# MEETING HIGHLIGHTS

The regular meeting of the Board of Supervisors of the Preserve at Wilderness Lake Community Development District was held at 9:30 AM on Wednesday, April 3, 2024. The official minutes will be posted on the District's website once they are approved by the CDD Board of Supervisors during the next scheduled meeting.

- **Landscaping:**

- Monitoring of turf damage, from the overspray of weed control. RedTree will replace the turf at no charge if it does not recover.
- Discussion regarding the trimming of Crape Myrtle trees. The board will consider a trimming proposal during the December Agenda.
- The board accepted the resignation of Supervisor Bryan Norrie, leaving seat 3 vacant.

- **Supervisor Requests:**

- Text message announcements and marketing

- **Audience Comments:**

- Vegetation in the Waverly Shores pond.
- Bond payoff information.

- **Staff Reports:**

- The Geo Tech samples of the roadway were completed.
- Discussion of tracking process of servicing of the ponds.
- Review of the Waverly Shores pond and vegetation.
- Assessments of the Cormorant Cove and Lodge docks were completed.
- Further SWFWMD pond permit repairs are scheduled to begin in mid-April.
- Discussion of Ethics Workshop date.

Reminder!



**NEXT CDD MEETING**  
**WEDNESDAY, May 1st - 6:30 PM**